



Protecting Marin Since 1934

# 2015

## ANNUAL REPORT



The mission of the Marin Conservation League is to preserve, protect and enhance the natural assets of Marin County



I'm proud to present Marin Conservation League's 2015 Annual Report. In it you'll find our financial results, a compilation of our actions and activities, and a list of MCL's supporters. (We wish we had room to include everyone who contributed in 2015.)

Throughout the year, in the effort to fulfill MCL's mission to preserve and protect Marin's natural assets and to impact local outcomes, we've advocated at stakeholder meetings, studied local issues, and tracked and commented on local plans, applications, proposed projects, and environmental impact reports. An equally important purpose of MCL is to provide conservation education to our members and the public. This is accomplished, in part, through our Water and Watershed speaker program. Last year's topics ranged from water storage to planning for sea level rise. At MCL's Business and Environment Breakfasts we hosted compelling presentations by pesticide research scientist Dr. Susan Kegley, and by our legislators State Senator Mike McGuire and Congressman Jared Huffman.

2015 also included a continuation of MCL's Walks into Conservation History—hikes in local landscapes accompanied by the stories of human persistence and funding needed to conserve the once privately-owned properties as public lands. In 2015, MCL adapted this popular series to add a Senior Walks into History program, similarly designed to foster environmental awareness while serving the needs of Marin's older population. MCL regularly continues to offer a variety of educational opportunities.

MCL's best-kept secrets, though, were the engaging presentations and collaboration that typically occur at our committee meetings. In an effort to break down silos and foster communication, MCL committee chairs actively seek and bring together environmental leaders, scientists, and directors from local government and public agencies. To view future committee agendas, minutes from previous meetings, or MCL's communications, positions, and policies, visit [marinconservationleague.org](http://marinconservationleague.org).

MCL's mix of veteran and new Board members kept, and continues to keep, the organization anchored, vibrant, and strong. But Marin Conservation League would not thrive without the support and participation of its partners and all of its contributors. Thank you!

*Kate Powers*

## STATEMENT OF ACTIVITIES

JANUARY 1 TO DECEMBER 31, 2015 (PREPARED FROM MCL RECORDS)

	Unrestricted Operations	Temp. Restricted Special Projects & Dedicated Funds	Board Restricted Legacy of the Land Endowment (LOL)	TOTAL
<b>SUPPORT AND REVENUE</b>				
<u>Support</u>				
Membership	\$95,661			\$95,661
Contributions	\$47,367	\$6,253	\$500	\$54,121
Grants Received	\$0	\$5,100		\$5,100
Special Events & Miscellaneous	\$19,260			\$19,260
Total Support	\$162,288	\$11,353	\$500	\$174,142
<u>Revenue</u>				
Interest & Dividend Income	\$19,133		\$33,308	\$52,442
Sales of Inventory less costs	\$27			\$27
Miscellaneous Income	\$956			\$956
Total Revenue	\$20,116	\$0	\$33,308	\$53,425
<u>Transfers</u>				
LOL Support for Operations	\$76,173		(\$76,173)	\$0
Net Assets Released from Restrictions	\$29,316	(\$29,316)	\$0	\$0
Total Transfers	\$105,489	(\$29,316)	(\$76,173)	\$0
Total Support, Revenue & Transfers	\$287,894	(\$17,963)	(\$42,365)	\$227,566
<b>EXPENSES</b>				
Program Services	\$201,021			\$201,021
Management & General	\$22,042			\$22,042
Fundraising	\$51,094			\$51,094
Total Expenses	\$274,157	\$0	\$0	\$274,157
Results from Operations	\$13,737	(\$17,963)	(\$42,365)	(\$46,591)
Investment Gain, Realized & Unrealized	(\$17,779)	\$0	(\$37,796)	(\$55,575)
Change in Equity	(\$4,043)	(\$17,963)	(\$80,160)	(\$102,166)
Total Equity, Year End 2014	\$410,176	\$62,099	\$1,658,241	\$2,130,516
Total Equity, Year End 2015	\$406,134	\$44,136	\$1,578,080	\$2,028,350

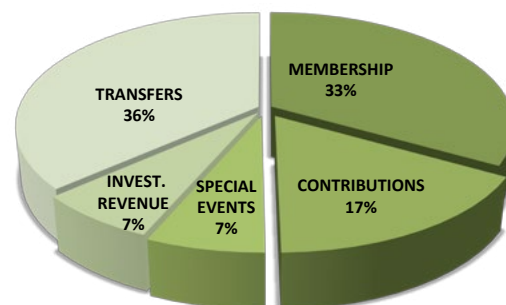
The above Statement of Activities summarizes MCL's 2015 financial results for MCL as a whole and for each of the separate funds maintained by MCL. The figures are from MCL's books and records and are not audited.

MCL maintains three funds: The Unrestricted Fund supports MCL's operations, environmental advocacy and education programs. The Temporarily Restricted Fund records MCL's management of funds dedicated to specific projects. Finally, the Board Restricted Fund records the income and expenditures of the Legacy of the Land (LOL) endowment. The income from the LOL provides ongoing support for MCL's operations.

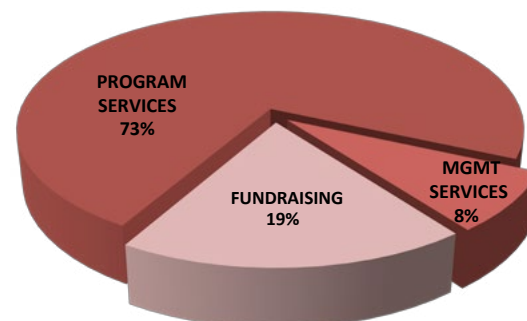
Exclusive of changes in value of its investments, MCL's operating revenue exceeded the cost of MCL's operations during the year. However, the Temporarily Restricted Fund, the LOL and MCL had a loss because the payments from these funds and MCL as a whole exceeded their receipts and investment income and gains during the year. Over half of the loss was due solely to a decline in the market value of MCL's investments.

In 2015, as in prior years, MCL relied importantly on the continued support of its members. We thank you for this support.

## 2015 Income—Operations



## 2015 Expenses—Operations





**JANUARY**

☼ Participated in stakeholder meetings convened by **Congressman Jared Huffman** to consider solutions to crowded and hazardous visitor parking outside **Muir Woods National Monument** and the resulting impacts on salmonid habitat in Redwood Creek.

☼ Recommended that the scope of the upcoming Draft EIR for the **Corte Madera Inn Rebuild Project** analyze impacts on pond habitat, storm water management and flood control, and traffic.

☼ Convened a stakeholder meeting of environmental and agricultural interests with Coastal Commission staff in an attempt to resolve outstanding agricultural issues in the **Marin Local Coastal Program Update**.

☼ In MCL's Water Program Series, hosted speaker **Scott Callow, Marin County Environmental Health Service Officer**, who outlined the health-related regulatory and permitting process for existing and new well development in Marin County.

**FEBRUARY**

☼ In a letter to Marin Clean Energy (MCE), recommended that MCE's **Draft 2016 Energy Efficiency Program Designs** build wider community support to encourage energy efficiency projects and measures.

☼ In a letter to U.S. Army Corps of Engineers regarding Larkspur Marina maintenance dredging, advocated that dredged material be applied for beneficial use in upland or marsh restoration rather than disposed of at the Alcatraz Island Disposal Site.

☼ Presented **Dr. Susan Kegley, Director of Pesticide Research Institute (PRI)** in Berkeley, at a Business-Environment Breakfast, who described PRI's research into the role of neonicotinoid pesticides in the **die-off of bee colonies**.

☼ Hosted a Water Program with engineers Scott Lyle and Russ Eberwein of the County's Department of Public Works Flood Control Division, who gave an update on the controversial **Ross Valley Flood Management and Watershed Program**.

☼ Submitted letter to the Novato City Council reiterating MCL's request that creek policies with **stronger creek protections be included** in the general plan update and not be deferred to a later CEQA document.

**MARCH**

☼ Developed a **MCL Trail Policy** applicable to all public lands and open spaces in Marin that would minimize the adverse impacts of recreation, protect the natural environment and wildlife habitat, and assure visitors of their safety and well-being.

☼ Submitted a letter to California Coastal Commission staff with suggested revisions of the staff's changes to Marin's proposed **Local Coastal Program Update**.

☼ Urged San Rafael Parks and Recreation Commission to use a portion of Measure A's funding for local parks to control invasive weeds in **San Rafael Open Space** lands.

☼ Hosted MMWD Director Armando Quintero, representing the California Water Commission, in a MCL Water Program Seriestalk on the Commission's role in ensuring that **Proposition 1 Water Bond** funds for water storage projects fulfill public benefits.

☼ Led a Walk into Conservation History at Rush Creek **Open Space Preserve and Rush Creek Marsh**, relating the history of local activists who prevented development from covering uplands and saved the adjoining marsh from being filled.

**APRIL**

☼ Submitted a letter to Congressman Jared Huffman supporting his efforts to transfer former Coast Guard residential property in Point Reyes Station to the County of Marin for **affordable housing (HR 1402)**.

☼ In a letter to the CPUC Energy Division, urged denial of applications by PG&E and other utilities to install, own, and operate **electric vehicle charging stations** in California.

☼ Recommended that the Marin County Community Development Agency include the

position of **Urban Streams Coordinator** in the County's FY 2015-2016 budget.

☼ Celebrated 81 years at MCL's Annual Dinner and heard keynote speaker **Debbie Raphael, Director of San Francisco Department of the Environment**, (dubbed the "Architect of San Francisco's Precautionary Principle") espouse the importance of partnerships in successful local sustainable practices.

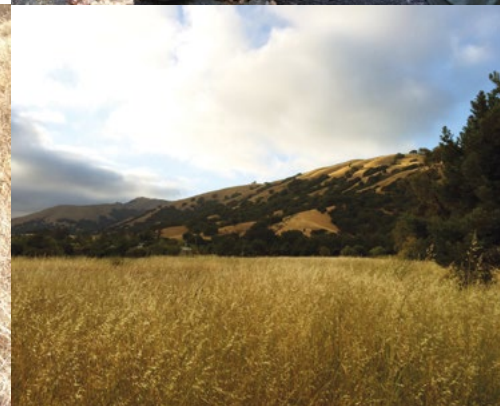
**MAY**

☼ Sent a letter to U.S. Fish and Wildlife Service advocating for its support in acquiring land to expand the **Corte Madera Ecological Reserve** (also known as Madera Bay Park).

☼ Endorsed Congressman Jared Huffman's Draft MOU between the National Parks Service and County of Marin to ease **parking outside Muir Woods** and thereby protect the Redwood Creek habitat.

☼ In a letter to Marin County Community Development Agency concerning amendments to the **Binford Road Development Plan**, voiced concerns over possible runoff of fluids from stored vehicles into the adjacent wetlands.

☼ At a Business-Environment Breakfast, featured **State Senator Mike McGuire**, who gave a wide-ranging overview of his work in the legislature on environmental issues in his district.



☼ Featured a presentation in the Water Program Series of the State Coastal Conservancy's **"Living Shorelines Project,"** in which oysters and eelgrass are utilized to protect Bay habitat and combat sea level rise.

☼ Continued to track progress of the **Point Reyes National Seashore Ranch Comprehensive Management Plan/Environmental Assessment** process and associated elk management issues.

## JUNE

☼ Urged Senator Mike McGuire to support the dedication of **Cap and Trade funds** to programs in energy efficiency, renewable energy, and improved land management practices, including soil carbon sequestration.

☼ Sponsored a tour of the **Giacomini Dairy and Pt. Reyes Farmstead Cheese** operation on Tomales Bay to observe operation of a methane digester and learn about sustainable dairy ranching and cheese-making practices from rancher Bob Giacomini.

☼ Launched the **"Slow & Say Hello"** campaign in collaboration with Marin Horse Council and Marin County Bicycle Coalition Off-road Program, to improve trail behavior and reduce conflicts among users.

☼ In a Water Program presentation, heard LAFCO chief Keene Simonds review conclusions and recommendations on the **supply/demand relationships of Marin's water providers.**

☼ Co-sponsored with Marin County Watershed Program a presentation on the **historic ecology of Novato Creek**, along with studies of current conditions and future projections.

## JULY

☼ Submitted comments on **Marin Clean Energy's Draft 2016 Energy Efficiency Program Implementation Plans**, recommending greater outreach to dairy, commercial, multifamily and single family sectors.

☼ In a letter to Mark Reed, CEO of the Martha Co., encouraged the Reed Family to consider

allowing acquisition of all or part of their 110-acre property on Tiburon ridge by a non-profit entity as **an alternative to development.**

☼ Encouraged the MMWD Board of Directors to complete its long-dormant **Wildfire Protection and Habitat Improvement Plan and EIR**, and include measures for effective control of invasive plants.

☼ Advocated that the Board of Directors, Marin County Open Space District, support **integrated pest management practices**, including herbicide where justified, on open space preserves to protect native plant species from invasive weeds and to reduce wildfire risk.

☼ Encouraged Marin Clean Energy to consider funding dairy energy audits and incentives to take advantage of opportunities for **clean energy and carbon reduction in local dairies.**

☼ Supported Marin County Parks and Open Space District staff's **vegetation and biodiversity management plan**, and urged the Board of Directors to support staff's existing invasive weed control programs.

☼ Entertained over 100 members and guests at MCL's annual summer **Picnic on the Patio.**

## AUGUST

☼ Responded to a Bay Area Air Quality Management District Public Notice, noting concerns about PG&E's remediation plan to excavate the site of the former San Rafael Manufactured Gas Plant on Third Street.

☼ Urged the San Rafael Planning Commission not to adopt a Mitigated Negative Declaration for San Rafael Corporate Center projects until the **migration off-site of polluted groundwater** had been clarified.

☼ Testified before California Public Utilities Commission urging its approval of MCE's **2016 and Beyond Energy Efficiency Portfolio.**

☼ Conducted a Walk into (Conservation) History at **Roy's Redwoods Open Space Preserve.**

☼ Featured **Congressman Jared Huffman** at a Business-Environment Breakfast, who outlined the challenges of trying to accomplish an environmental agenda in a Republican-controlled Congress.

## SEPTEMBER

☼ In a letter to Coastal Conservancy, supported Trout Unlimited's grant request for \$250,000 to **improve habitat in Millerton Creek** under

## Spotlight on Climate

A quick scan of MCL's activities and actions in 2015 reveals the diversity of environmental issues that kept MCL volunteers and staff busy throughout the year. Whether it was advocating for better control of invasive weeds that threaten rare plants, evaluating impacts of new trails in open space, analyzing the impacts of a proposed new development on sensitive habitat, confronting ongoing traffic challenges, urging coordinated planning for impending sea level rise, or tracking a vital piece of state legislation – MCL took it on and followed through with education, analysis, advocacy, and action.

Particularly noteworthy in 2015, was the continued role of MCL's Climate Action Working Group, an MCL Group that was formed in 2014. In 2015 the CAWG continued to grow as a clearinghouse and forum for MCL members and other organizations engaged in varied issues of climate change. The Working Group has benefitted greatly from the experience and collaboration of other organizations that have brought climate change to the forefront of environmental action in Marin.

As a clearing house CAWG's monthly meetings brought together activists from Sustainable San Rafael and Marin, Resilient Neighborhoods, Main Street Moms from West Marin, Organizing for Action, and others, culminating in support for the County's updated Climate Action Plan 2015 Update, which was approved by the Board of Supervisors in November. With CAWG's guidance, MCL co-sponsored with more than two dozen other organizations a forum **"Time to Lead on Climate – CA:US:UN."** The well-attended meeting was timed as a local "kick-off" to the UN Climate Conference in Paris and its call for global action.

As a forum for education, the CAWG engaged monthly speakers who are working on every facet of this vitally important issue, to keep the committee current on both state and local programs and strategies to meet California's ambitious greenhouse gas reduction goals, and on progress toward coordinated planning for sea level rise.

The CAWG in 2015 exemplified MCL committees' continued ability to act on the significant issues of the day.



Phase 1 of the Restoration Plan.

☼ Urged Assembly Member Levine to support SB 32, which sets pollution reduction target for 2050, and SB 350, which sets "50/50" goals for 2030 for **renewable energy and increased energy efficiency** in existing buildings.

☼ Led a **Senior Walk into History** at China Camp State Park and Santa Margarita Island Open Space Preserve.

☼ Urged the County to mow **Pacheco Valle open space meadow** in Novato within 10-foot road maintenance buffer only, so as to protect habitat for ground nesting birds while reducing fire hazard.

☼ Organized volunteers and led **Coastal Cleanup** at sites in Novato and Sausalito.

## OCTOBER

☼ Submitted a letter to California Coastal Commission supporting agricultural provisions in the revised **Marin County Local Coastal Plan Update**.

☼ Developed MCL Policy for the use of **Integrated Pest Management** methods to control invasive plants, protect the biodiversity in native habitats, protect human and natural communities from catastrophic wildfire, and maintain healthy rangelands and pastures.

☼ In a letter to Marin County Board of Supervisors, encouraged better coordination among design elements in Civic Center Improvement plans along **Civic Center Drive**.

☼ Led a Senior Walk into History at **Rush Creek Open Space Preserve**.

☼ Honored **MCL Leaders Circle** members at a luncheon at McNears Beach Park in San Rafael.

☼ Participated in a weekend celebration of the **first anniversary of One Tam**, a collaboration made up of four public land management agencies and the Golden Gate National Parks Conservancy.

☼ In the Water Program Series, heard **Warner Chabot, Executive Director of the San Francisco Estuary Institute** speak on "Finding creative solutions to the long-term challenge of rising sea level."

## NOVEMBER

☼ Urged the California Public Utilities Commission to reject PG&E's proposed **Power Charge Indifference Adjustment (PCIA)**, an exit fee imposed when a utility customer departs



from PG&E and for which PG&E requested an increase.

☼ Submitted comments to Golden Gate National Recreation Area, supporting, in concept, a **reservation system for Muir Woods National Monument** to reduce parking on Muir Woods Road and its associated impacts.

☼ Adopted a **MCL Agriculture Policy** that updates former policies and incorporates natural resource conservation, agricultural land use, and Marin's agricultural heritage.

☼ In a letter to Mt. Tamalpais State Park, opposed the proposed change-in-use of **Easy Grade Trail** between Bootjack Camp and the Mt. Theater to accommodate shared use by mountain bikers and hikers.

☼ Taught **riparian restoration using native willows** at a hands-on willow-staking workshop at Chileno Valley Ranch in partnership with Marin Resource Conservation District.

☼ Co-sponsored a large public forum at Dominican University with more than two dozen other organizations: **"Time to Lead on Climate: CA: US: UN."**

☼ Testified in support of the **County's Climate Action Plan 2015 Update** before the Board of Supervisors.

## DECEMBER

☼ Submitted comments to Marin County Parks requesting additional clarification as to which preserves and trails would be included in the **Inclusive Access Plan**.

☼ Submitted comments to the Corte Madera Planning Dept. on the **Corte Madera Inn Rebuild Project Final EIR**, supporting retention of the existing pond for its flood detention benefits and habitat values.

☼ Entertained members and guests at the annual **MCL Holiday Party**.



## 2016-2017

### BOARD OF DIRECTORS OFFICERS

Kate Powers, President  
Nona Dennis, 1<sup>st</sup> Vice President  
Ann Thomas, 2<sup>nd</sup> Vice President  
Larry Minikes, Secretary  
Kenneth Drexler, Treasurer

### DIRECTORS

Heather Furmidge	Linda Novy
Sally Gale	Pamela Reaves
Doug Karpa	Susan Stompe
David Lewis	Judy Teichman
Ralph Mihan	Arlin Weinberger
Bob Miller	Doug Wilson
Pat Nelson	Greg Zitney
Vicki Nichols	

### STAFF

Shannon Doherty,  
Operations Administrator  
Kirsten Nolan,  
Communications Coordinator



## \$1,000 +

Deborah and Arthur Ablin  
Arntz Family Foundation  
Jean and Lee Berensmeier  
Robert Blitzer and Xentry  
Jean and Stuart Brown  
Kate and Jeff Colin  
County of Marin  
Cox Family Fund  
Kenneth Drexler and Sarah Leach  
EarthShare California  
Bishop Pine Fund  
Barbara Farley  
Ginnie and Peter Haas, Jr. Fund  
Clara-Belle L. Hamilton Core Trust  
Kathy and Rick Lowrey  
Jane Miller  
Georgene and Stanley Pasarell  
Peggy Rathmann and John Wick  
Nicholas Rau  
Brian Ashe and Cynthia J. Rigatti  
Alison and Michael Seaman  
Jean Starkweather  
Thomas Theodores  
Barbara and David Whitridge  
Rex Wolf

## \$500 to \$999

Janet W. Allen  
Bellam Self Storage and Boxes  
Priscilla and Michael Bull  
Mary Buttarro  
Joyce Clements, Lucy Reid  
and Susan Robinson  
Carson Cox and Deborah Haase  
Thomas Crowell  
Thomas Delebo  
Nona Dennis  
Margot Fraser Fund  
Katharine H. Johnson  
Peggy Bannan and Robert Johnston  
Peter Ledee  
Marin Clean Energy  
Ralph Mihan  
Sue Missimer  
Ellen and Peter Obstler  
Pazala  
Caroline and Bill Press  
Purple Lady/Barbara J. Meislin Fund  
Mary Kent and Max Schardt  
Jody Thompson  
Julia Violich  
Arlin Weinberger  
Effie Westervelt

## \$250 to \$499

Karl Baeck  
Sarane Bowen  
Joyce Britt  
Charles Brousse and Phoebe Moyer  
Wendy Buchen  
Margaret Buehler  
Annie Bugher  
Cagwin and Dorward  
Anne-Marie Caple  
Grace Carter  
Mary Casey  
Christine Comaford  
Helga and Terrence Comerford  
Katherine Crecelius  
Katherine and Robert Cuneo  
Leslie and Michael G. Cunningham  
Don Dickenson and Doug Lee  
Noel and Donald Dickey  
Michael DiMaggio  
Julie and Jon Elam

Carol and David Fairchild  
Fairfax Lumber and Hardware  
Sharon Farrell  
Fischer Family Fund  
Gardeners' Guild  
Edward Gaston and Lori Zager  
Gary Giacomini  
Cynthia Goddard  
Jill and Robert Greenman  
Jana Haehl  
Kevin Haroff  
Alfred Heller  
Linda and Peter Hoch  
Anne Marie Holden  
William Hudson  
David Hunter  
Elizabeth Jennings  
Katz Family Foundation  
Abner Korn  
Jack Krystal  
Warren Lefort  
Michael Linvill  
Susanne and Jeffrey Lyons  
Catherine and Richard MacDonald  
Allan Martini  
Lotte Moore  
Susan and Dennis Moritz  
Peter Moritzburke  
Lawrence Mulryan  
Lois and Frank Noonan  
Nute Engineering  
Christine and Edward O'Neill  
Stephanie Moulton-Peters  
and Roger Peters  
Dorothy Pettit  
Catherine Lee and Pamela Reaves  
Francis de Geus and Helaine Reiner  
Richard Robbins  
Dorothy and Roger Roberts  
Judith and Peter Sager  
Leah Schoellkopf  
Kate Sears  
Peggy Sheneman  
Janetta and Noel Shumway  
Eleanor Sluis  
Susan and Robert Spofford  
April Starke Slakey  
Sandra Swanson  
Judith Teichman  
Barbara Wilson  
Barbara Winter  
Doug Wilson and Periann Wood

## \$100 to \$249

Helen Abe  
Susan Adamson  
Julie Allecta  
Jane Allen  
Helen Anawalt  
Gail and Carsten Andersen  
Judy Anderson  
Angel Island Conservancy  
Joyce and David Applen  
ATCO Pest Control  
Margaret Badger  
Randy Bainbridge  
Bank of Marin  
Nancy and Donald Barbour  
Hank Barner  
Judith Barr  
Bartlett Tree Experts  
Erica Baum  
Theodore Bayer  
Catherine and James Bedilion  
Mary and Thomas Belshe  
Edward Bennett  
Neal Benowitz and Alice Fredericks  
Robert Berner

Janath Berry-Kadrie  
Betsy and Dan Bikle  
Celeste and Jerry Binnings  
Beverly and Mark Birnbaum  
Delanie and Tom Boss  
Larry Bragman  
Dorothy and Richard Breiner  
Carla Buchanan  
Linda and Robert Bundy  
Bunker & Company LLP  
California Native Plant Society of Marin  
William Callender  
Donna Cameron  
Beth Cederstrom  
Claudia and David Chittenden  
Paul Chuljian  
Joanie Ciardelli  
Linda and James Clever  
Mary Ann and Peter Cobb  
Dayton Coles  
Kay and Tom Conneely  
Patricia Cormia  
Caitlin Crain  
Joy Dahlgren  
Nancy Danielson  
Peter Davis  
Bonnie De Clark  
Daniel Drake  
Joanne Dunn  
Pat Eklund  
Patricia Elvebak  
Equinox Landscape  
Claire J. Eschelbach  
Joan and Evan Evans  
Anna Everest and James Kennedy  
Caroline Everts  
Phyllis Faber  
Pamela and Dennis Fisco  
Norma H. and Charles E. Flanik  
Barry Flicker  
Barbara Ford  
Cathy Fox  
Nora Contini and John Franklin  
Leslie Franklin  
Sally and Thomas Freed  
Michael A. Freeman  
David Frey and Esther Kligman-Frey  
Dianne Fruin  
Alison Fuller  
Donn Furman  
Heather Furmidge  
Sally and Mike Gale  
Colette and Stephen Galiani  
Ellen Garber  
Kathy Gervais  
Yolanda and Jack Gibson  
Lawrence Goldberg  
Nancy Golden  
Laurel and Michael Gothelf  
James Grant  
Randy and David Greenberg  
Deborah and John Greenspan  
Maureen Groper  
Gary Haber  
Sonja Hanson  
Susan and David Harnden  
Robert Hart  
Roy Hendrickson  
Robert Henn  
Wade Holland  
Rachel Hooper and Peter Zingg  
Susan Hopp  
Bettina and David Hughes  
Eugene and Joan Jacks  
Paul Jensen  
Colleen Johnson  
Joyce Johnston  
Debra Jones  
Daniel Kalb

Kamman Hydrology and Engineering  
Robert Kennis  
Delyn Kies  
Julie and Steve Kimball  
Susan Kirsch  
Harriet and Thomas Kostic  
Erik and Sunny Krumrey  
Nancy Kull and Bill Young  
Sheila Lagios  
Uta Landy and Philip Darney  
Matthew Leeds  
Dotty LeMieux  
William Levine  
Barbara and Warren Levinson  
Mimi and Stephen Lewis  
Gretchen Likander  
Pete Lindfors  
Lindskog Family Investments  
Nanette Londeree  
Tieli and Bill Long  
Sarah and John Lowry  
Joan Lubamersky  
Lukens Law Group  
West Marin Compost  
Diane and Leslie Lynch  
Rose and Charles Maher  
Amanda and Ron Mallory  
Mike Marcley  
Marin Garden Club  
Marin Municipal Water District  
Marin Sanitary Service  
Marindependent Insurance Services  
MarinLink  
Marks Realty Group  
Claire McBride  
Pete McFarland  
Mike McGuire  
Joy and Steve McKeever  
Doyleen McMurtry  
Sharon McNamee  
Wallace McQuat  
Stephanie Mendel  
Microsoft Giving Campaign  
Sarah and Dudley Miller  
Don H. Miller  
Joni Harris and Paul Minault  
Laura and Glenn Miwa  
Mia Monroe  
Elizabeth Moody  
Beverly Mooney  
Patricia and Alan Negrin  
Robert Newcomer  
Vicki Nichols  
Patricia Nicolay  
Karina Nielsen  
John Novick  
Linda J. Novy and Associates  
Julie Nunes  
John Nygren  
Gary Oates  
Anne Oklan  
Diane Ongaro  
David Ortez  
Richard Otter  
John Palmer  
Maria Pelletier  
Carol Peltz  
Perry's Art Supplies and Framing  
Susan Peters  
Gary O. Phillips  
Edith Piltch  
Point Reyes Farmstead Cheese Co.  
Lauren and Dieter Pollak  
Carla Bourque and Brett Powell  
Kate and Joe Powers  
Nancy and Robert Praetzel  
C. Delos Putz  
R & J McClelland Dairy  
Nancy and Kurt Rademacher

Debbie and Miles Raphael  
 Patricia Raven  
 Leslie Reiber and David Witt  
 Kathy and Phil Reilly  
 Laura and Robert Repke  
 Katie Rice  
 Jerry Riessen  
 Bill Ring  
 Mari Robinson  
 Sheila and Michael Rokeach  
 Linda Rosen  
 Jan Hamrin and Tim Rosenfeld  
 Gladys and Norman Sanguinetti  
 Santa Venetia Neighborhood Assoc.  
 Susan Schlosser  
 Sonja Schmid  
 David Schreck  
 Seagate Properties, Inc.  
 Kathrin Sears  
 Serenity Knolls  
 Lori and Glenn Shannon  
 Robert Shaw  
 Judie and Leonard Shaw  
 Shari and Clem Shute  
 Nancy and Steven Sicher  
 Andrea Taylor and Stuart Siegel  
 Kathleen Skeels  
 Grace Rogers and Lawrence Smith  
 Wilma Smith  
 Doreen and Vernon Smith  
 Lloyd Smith  
 Sara and Dan Sonnet  
 Robert Spatz  
 Barbara Spicer  
 Gary Spratling  
 Monica and Scot Stafford  
 Donald Stenson  
 Christopher Longaker  
 and Molly Sterling  
 Tami and Matt Stolte  
 Susan and Brian Stompe  
 Taste Marin  
 Deborah Thompson  
 Bee Thorpe  
 David Tirrell  
 Tom Harrison Maps  
 Cynthia and Kurt Trutner  
 Andrew Shaw and Melinda Van Meter  
 Christina and Kenneth Waldeck  
 Rosalie and Ralph Webb  
 Paul Webster  
 Weinress and Associates  
 Law Office of David J. Weinsoff  
 Betsy Bennett and Oliver Weir  
 Wells Fargo Community Support  
 Kay Werdegarr  
 Lei Ann Werner  
 The Steve and Chris Wilsey Fund  
 Cindy Winter  
 Christine Wood  
 Ingrid and Steven Woods  
 Lynne and Charles Worth  
 Chris Yalonis

## \$50 to \$99

Annette and Gregory Abell  
 Nancy Abodeely  
 Heidi Allgaier  
 Gregg Aspacher  
 Susan Barbour  
 Karen and Jim Barkovich  
 Charles Charles  
 Lee and Frank Battat  
 Al Baumann  
 Shirley Beers  
 Elaine and Richard Behrens  
 Robert Belichick  
 Hillair Bell and Michael Sheets

Nancy Bell  
 Dorothy and Marshall Bentley  
 Judy and H. Spencer Bloch  
 Margaret Lee Blunt  
 Annette Bock  
 Layla and James Bockhorst  
 Barbara Boucke  
 Patricia Bradford  
 John Brandon  
 Dixie and Richard Brown  
 Paul Brownlee  
 Clare and Bill Buchanan  
 Eva Buxton  
 Cory Bytof  
 William Caddell  
 Vickie Cardellini  
 Karen Carmody  
 Daniel Carney  
 Michael Cass  
 Jerri Ceschi  
 Rilla and Marvin Chaney  
 David Chenoweth  
 John Chesley  
 Susan Bishop Chukerman  
 and Barry Chukerman  
 Carolyn and Richard Cogan  
 Barbara Coler  
 Stone Coxhead  
 Judith Coy  
 Sheilagh Creighton  
 and Robert Tafelski, Jr.  
 Candice Curtis and Carl Weissensee  
 Elizabeth Danel  
 Ginette Davis  
 Jacqueline De Nevers  
 Charles Dennis and Elizabeth Graceffo  
 Sarah and William Devlin  
 Thomas Diettrich  
 Karen and Ferenc Dobronyi  
 Lillian and Charles Donald  
 Deborah Dorosin  
 Ruth Downing  
 Patricia and Richard Dresel  
 Laura Duffy  
 Bette Durham  
 Ronita and Frank Egger  
 James Elias  
 Lewis Engel  
 William Evers  
 Anne Fedoroff  
 Richard Bergmann  
 and Denise Filakosky  
 Susan and Geoffrey Flint  
 Joan Florsheim  
 Tom Flynn  
 Dee and Rick Fraites  
 Anita and Jim Franzi  
 Lewis Fredrickson  
 Richard Gale  
 Ann Gessert  
 Sheila and John Girton  
 Richard Glanville  
 Carol Gold  
 Linda L. Gomez  
 Rika Gopinath  
 Elizabeth and John Graham  
 Blair Gray  
 Alison and Don Greenfield  
 Joyce and Marty Griffin  
 Helen Gross  
 Marjorie Guggenheimer  
 Sandra and Tom Guldman  
 Katy Hallal  
 Mark Scott Hamilton, Jr.  
 Sharon Hampton  
 Yuri Hanamoto  
 Richard Haney  
 Margaret Harding  
 Linda Hearne

Virginia and Sigmund Herz  
 Christine Heubach  
 Elaine and Harry Hicks  
 Faye Hinz  
 Sandra and Fred Hirschfield  
 Arthur Hoffman  
 David Holloway  
 Roger F. Hooper, III  
 Bruce Hope  
 Sara and Daggett Howard  
 Susan and Jared Huffman  
 Carolyn Hughes  
 Harriet and David Hyams  
 M. J. Jacobson  
 Margaret Johnson  
 Carolyn and Nick Kanas  
 Fred Kanter  
 Charlene and Kenneth Kelzer  
 Robert M. Kennedy  
 Mary Lou King  
 Jean and Steven Kinsey  
 Jocelyn Knight  
 Anne Knobloch  
 Gary Kraght  
 Marshall Krause  
 Mary and Robert Kroninger  
 Cecelia Kudlick  
 Pamela and Cal Kurzman  
 David Haskell and Kiki LaPorta  
 David Lakes  
 Cynthia Lamar  
 Cynthia and Hugo Landecker  
 Yvonne and Matthew Lawrence  
 Anne Layzer  
 Sharon and Glenn Lehrer  
 Jonathan Leone  
 Mary Hanley and Linda Levey  
 Arthur Libera  
 Ann and Harry Likas  
 Amy and Joe Likover  
 Joan and Michael Lippman  
 Martin Lowenstein  
 Kiley and Eric Lucan  
 Antonio Lupo  
 Chris Mallias  
 Bonnie Marks and Robert Miller  
 Willa Marten  
 Alan Marwick  
 Stephen Mason  
 and Ginger Souders-Mason  
 Joy and Gene McCabe  
 Carol and John Wyek  
 Marilyn and David McConnell  
 Anne McElfresh  
 Grace and Mort McMichael  
 Maureen Meikle  
 William Mena  
 Donna and Gilbert Messic  
 Sharman and Douglas Milani  
 Donna Miller  
 Barbara and Alan Miller  
 Rick Misuraca  
 Robert Mithun  
 Elizabeth Moore  
 and Burke Zimmerman  
 Thomas Moran  
 Mary Morgan  
 Virginia Murillo  
 Patricia Nelson  
 Carland and William Nicholson  
 Christina and Chuck Oldenburg  
 Diana Conti and Elias Olson  
 Walter Oppenheimer  
 Nancy and James R. Osborn  
 Webster Otis  
 Otsu Kelzer  
 The Outdoor Art Club  
 Thomas Peacock  
 Anthony Petrocetto

Patricia and David Pfeifer  
 Barbara and Rudolph Picarelli  
 Noelle and Claude Poncelet  
 Donys and Robert Powell  
 Martha Proctor  
 Robert Raab  
 Barbara Ravizza  
 Elaine and Arthur Reichert  
 Philip Richardson  
 Cayen and Thomas Robertson  
 Melissa and David Robinett  
 David Robinson  
 Carol Robinson  
 Peggy and Cary Rosen  
 Barbara Rothkrug  
 Barbara Rozen  
 Vicki Rupp  
 Susan Ryan  
 Robert Ryder  
 Richard Sagebiel  
 Amy and Matt Sagues  
 Jill and Thomas Sampson  
 Lynda and Larry Scheibel  
 Hans Schmid  
 Judy Schriebman  
 Anne and William Schwarzer  
 Carrie Sherriff  
 Mark Shirley  
 Susan Simpson  
 Nancy Skinner  
 Charles Skomer  
 Dolores Skore  
 Stephanie Smith  
 Karen Solov  
 William Stephens  
 Elaine and Dwight Straub  
 Marie and Peter Sullivan  
 Charlotte Sweeny  
 Adrienne Sweeting  
 Aldo Tarigo  
 Jill and John Templeton  
 Peter Tiernan  
 Thomas Herington and Gary Topper  
 Tina Torresan  
 Barbara Turrentine  
 Pat and Frank U'Ren  
 Cynthia and Chandu Vyas  
 Michael Walker  
 Tommie Weldon  
 Elaine and David West  
 Ann and Hugh West  
 Gail and Don Wilhelm  
 Hilary Winslow  
 Anne Wooliever  
 Anne and Chip Wray  
 Eugenie Yaryan  
 Suzanne Zimmerman

## Goods and Services

Book Passage  
 Ronita and Frank Egger  
 Evo Spa  
 Fairfax Lumber & Hardware Co.  
 Susan Frank  
 Marin Theatre Company  
 Mountain Play Association  
 Peacock Gap Golf Club  
 Nancy and Robert Praetzel  
 Roost  
 Stuart Smith  
 Susan and Brian Stompe  
 Teeny Cake  
 Toast  
 Tomatina Restaurants  
 Yoga Tree



MARIN CONSERVATION LEAGUE  
175 No. Redwood Dr. Ste. 135  
San Rafael, CA 94903  
marinconservationleague.org  
(415)485-6257

RETURN SERVICE REQUESTED

Non-Profit  
Organization  
U.S.  
POSTAGE  
PAID  
Permit NO. 151  
San Rafael CA



# MARIN CONSERVATION LEAGUE 2015 ANNUAL REPORT



Marin Conservation League (MCL) works to preserve and protect the natural resource values and assets of Marin, focusing its action on issues of countywide significance or issues which may prove to be precedent-setting.

MCL places particular emphasis on those issues having important land use implications or impacts on Marin's environment and quality of life.

MCL looks for effective solutions through its own advocacy efforts as well as through working in close collaboration with other organizations to address major environmental challenges and concerns in Marin.

MCL is a non-profit 501(c)3 organization. All donations and dues are tax-deductible to the extent allowed by law.

This Report is printed in Marin on recycled paper. Text by Nona Dennis. Design and production by Dru Parker. Photos by Shannon Doherty, Sally Gale, Vicki Nichols, Dru Parker, Kate Powers and Greg Zitney. Cover photo by Stuart Smith.