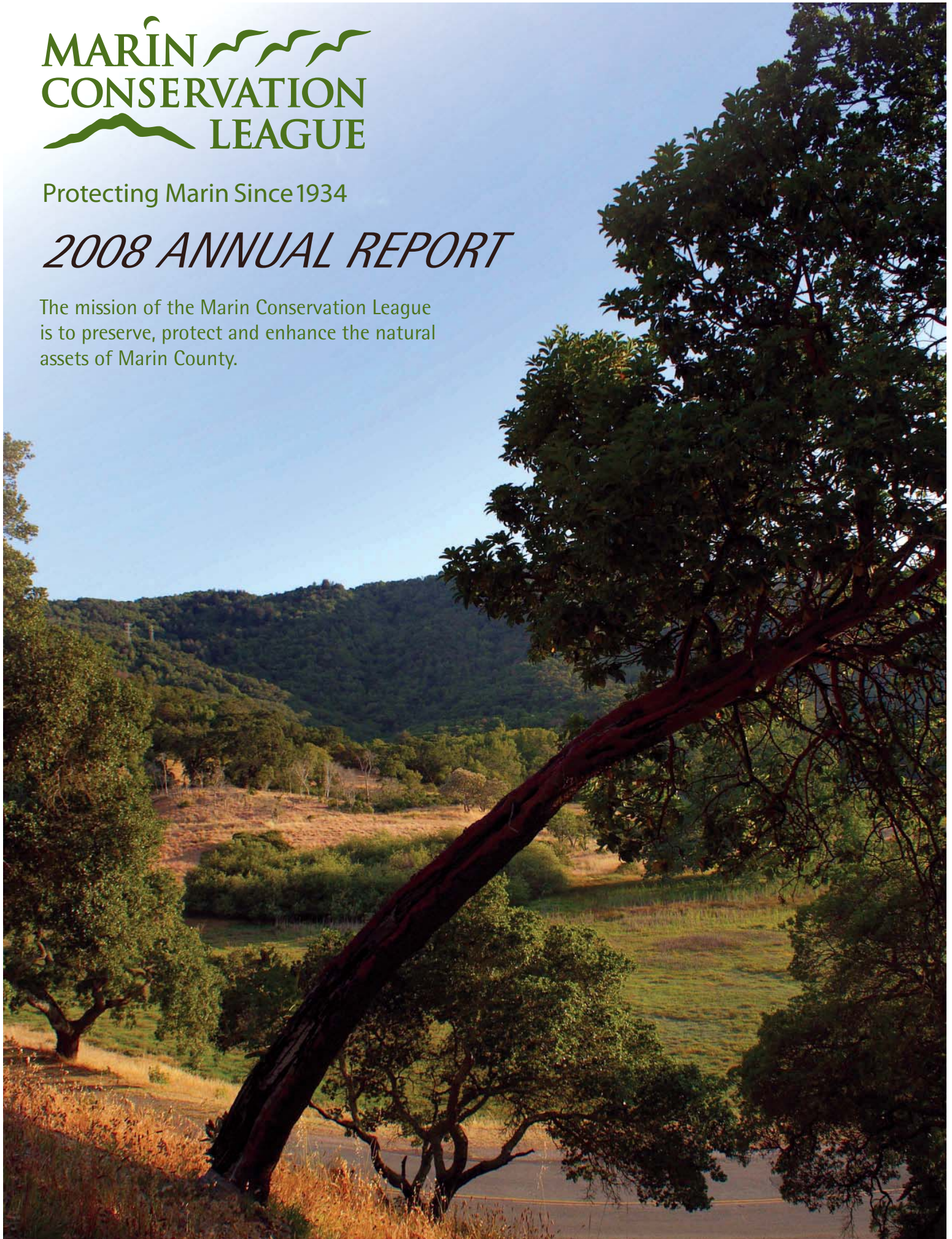




Protecting Marin Since 1934

## *2008 ANNUAL REPORT*

The mission of the Marin Conservation League is to preserve, protect and enhance the natural assets of Marin County.





MARIN CONSERVATION LEAGUE  
BOARD OF DIRECTORS

Officers

Nona Dennis, Mill Valley, President

Daniel Sonnet, San Rafael,  
First Vice President

Roger Roberts, San Rafael  
Second Vice President

Larry Smith, Nicasio, Secretary

Kenneth Drexler, Fairfax, Treasurer  
Directors

Peter Asmus, Stinson Beach

Betsy Bikle, Mill Valley

Priscilla Bull, Kentfield

Joe Bunker, San Anselmo

Carson Cox, Mill Valley

Bruce Fullerton, Mill Valley

Jana Haehl, Corte Madera

Brannon Ketcham, Fairfax

Marge Macris, Mill Valley

Amy Marr, Mill Valley

Vicki Nichols, Sausalito

Michelle Passero, Mill Valley

Brett Powell, Mill Valley

Tim Rosenfeld, Mill Valley

Susan Stompe, Novato

Periann Wood, Mill Valley

Board of Directors meetings are held  
the third Tuesday of the month at  
7:30 PM and are open to all.

Staff: Dru Parker, Operations  
Manager

Jessica Grace, Operations  
Admin.

Contact Information

1623-A Fifth Avenue  
San Rafael CA 94901

415.485.6257

415.485.6259 FAX

[mcl@marinconservationleague.org](mailto:mcl@marinconservationleague.org)

[www.marinconservationleague.org](http://www.marinconservationleague.org)

Monthly Committee Meeting  
Schedule (subject to change):

Land Use & Transportation:

1<sup>st</sup> Wed. of the month, 8:00 – 10:00 AM

Parks & Open Space:

2<sup>nd</sup> Thurs. of the month, 3:00 – 5:00 PM

Creeks, Watersheds & Wetlands; North  
Marin Unit:

Call 415.485.6257 or see our  
website for meeting details.

Meetings (except for NMU) are at  
1623-A Fifth Avenue, San Rafael

Marin Conservation League was founded  
in 1934 to preserve, protect and enhance  
Marin County's natural assets.

MCL is a non-profit 501(c)3 organization.  
All contributions and memberships are tax-  
deductible to the extent allowed by law.



Printed on recycled paper



Dear Friends:

It is my pleasure, on behalf of the Marin Conservation League Board of Directors, to report the League's activities in 2008. You – the members and supporters of MCL – are the foundation of this organization, and we honor and thank you! Without your support, our accomplishments would not be possible.

This year was the League's 74th year – an opportunity to review MCL's legacy and begin planning for our 75th anniversary. The most powerful lesson to emerge from this legacy is that although decades have passed since MCL's founding, the land protection tools, tactics, and strategies that were championed by the League's founders are timeless – as relevant in 2008 as they were in 1934! The Action Calendar on pages 6 and 7 provides abundant evidence of this truism.

2008 began with little warning of the economic difficulties it would present. Now as 2008 has turned into 2009, it is clear that economic downturn is having an impact on environmental projects around the State. This makes it even more important that MCL remain vigilant on all environmental fronts. It also is clear that, consistent with the general economy, non-profit organizations like MCL have been and will be faced with unusual challenges. That is evident from our year-end financial report.

The economic disruption did not prevent the League from being effective, however. You will be impressed by the diversity and scope of issues that occupied MCL's attention. Some of the issues addressed in 2008 will be familiar from past years – showing that diligent tracking must go on for decades. For example, in 2008, the League continued to combat overdevelopment on the sensitive former wetlands at Smith Ranch Airport in San Rafael, which have been under threat since the late 1970s.

Among the scores of actions described in the following pages, three are especially emblematic of MCL's broad interests. Baltimore Canyon: MCL's partnership with the Marin County Open Space District (MCOSD) to raise funds acquiring a critical Baltimore Canyon Trail Access evoked MCL's long legacy of securing open space for the enjoyment of future generations. The League was aware of this access blockage more than 25 years ago, so when the property became available, it was eager to jump in to help the MCOSD acquire this important half-acre. Redwood Landfill: Monitoring operations and expansion plans at this landfill have occupied MCL's attention for almost 30 years, particularly in the past decade. MCL looks forward to future years when landfill issues will become the promises of zero waste! Global Impacts: Mathis Wackernagel's talk on the Ecological Footprint, at the League's Annual Dinner in April 2008, brought home to Marin the broad societal concern over the consumption "overshoot" that is exhausting the planet's resources and contributing to global climate change.

2008 demonstrated that MCL's environmental activism, local in focus and global in scope, persists in spite of economic ups and downs. For 2009 and following years, MCL will count on you to help the League to continue its activism and be part of the solution!

Sincerely,

A handwritten signature in cursive script that reads "Nona Dennis".

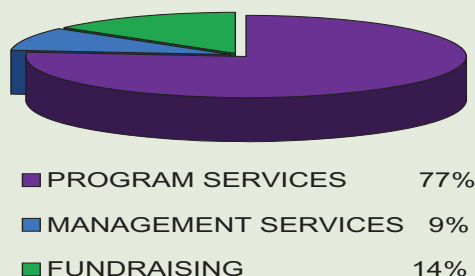
Nona Dennis  
President

# STATEMENT OF ACTIVITIES

January 1 to December 31, 2008

(Prepared from MCL Records)

	Unrestricted (Operations)	Temp. Restricted (Projects/Dedict'd)	Board Restricted (Legacy / Land)	Total
<b>SUPPORT AND REVENUE</b>				
<b>Support</b>				
Membership	\$ 83,351			\$ 83,351
Contributions	\$ 54,558	\$ 107,871		\$ 162,429
Special Events & Miscellaneous	<u>\$ 21,080</u>			<u>\$ 21,080</u>
<b>Total Support</b>	<b>\$ 158,989</b>	<b>\$ 107,871</b>	<b>\$ 0</b>	<b>\$ 266,859</b>
<b>Revenue</b>				
Interest & Dividend Income	\$ 8,826		\$ 33,271	\$ 42,097
Project Management Fees	\$ 739			\$ 739
Sales of Inventory less costs	\$ 25			\$ 25
Miscellaneous Income	<u>\$ 536</u>			<u>\$ 536</u>
<b>Total Revenue</b>	<b>\$ 10,125</b>	<b>\$ 0</b>	<b>\$ 33,271</b>	<b>\$ 43,396</b>
<b>Transfers</b>				
Transfer: LOL to Operations	\$ 73,453		-\$ 73,453	\$ 0
Transfer: Operations to LOL	-\$ 9,292		\$ 9,292	\$ 0
Net Assets Released from Restrictions	<u>\$ 98,577</u>	<u>-\$ 98,577</u>		<u>\$ 0</u>
<b>Total Transfers</b>	<b>\$ 162,738</b>	<b>-\$ 98,577</b>	<b>-\$ 64,161</b>	<b>\$ 0</b>
<b>Total Support, Revenue &amp; Transfers</b>	<b>\$ 331,852</b>	<b>\$ 9,294</b>	<b>-\$ 30,890</b>	<b>\$ 310,255</b>
<b>EXPENSES</b>				
Program Services	\$ 238,869			\$ 238,869
Management & General	\$ 28,585			\$ 28,585
Fundraising	<u>\$ 44,342</u>			<u>\$ 44,342</u>
<b>Total Expenses</b>	<b>\$ 311,796</b>	<b>\$ 0</b>	<b>\$ 0</b>	<b>\$ 311,796</b>
Results from operations	\$ 20,056	\$ 9,294	-\$ 30,890	-\$ 1,541
Investment Gain, Realized & Unrealized	-\$ 68,417	\$ 0	-\$ 474,192	-\$ 542,609
Change in Equity	-\$ 48,360	\$ 9,294	-\$ 505,082	-\$ 544,149
<b>Total Equity, Start of 2008</b>	<b>\$ 333,176</b>	<b>\$ 58,613</b>	<b>\$ 1,523,501</b>	<b>\$ 1,915,291</b>
<b>Total Equity, Year End 2008</b>	<b>\$ 284,816</b>	<b>\$ 67,907</b>	<b>\$ 1,018,419</b>	<b>\$ 1,371,142</b>



The Statement of Activities below summarizes MCL's financial results for the 2008 calendar year for each of the funds maintained by MCL and for the organization as a whole. The figures are taken from MCL's books and records and are not audited.

In 2008, MCL's results were adversely affected by the substantial drop in investment values. Applicable accounting rules require that MCL at the end of fiscal year adjust the value of the investments on its books to their market value at year-end even if the change in value is only on paper. The substantial decline in the value of MCL's investment assets in 2008 was recorded as an expense on MCL's books. This expense is the source of the substantial loss for 2008.

If the unrealized loss in the market value of MCL's investments was excluded from the above Statement of Activities, MCL as a whole would have had a gain for 2008 of \$23,109.

MCL's Unrestricted (Operations) Fund supports the organization's environmental advocacy and day-to-day programs. If the unrealized decline in the value of the investments held in this Fund were excluded, this Fund would have had a gain in 2008 of \$19,867.

Your past and continuing support of MCL's environmental work is essential to its success. We thank you for it.



MARIN PHOTOS BY DRU PARKER

# MARIN CONSERVATION LEAGUE 2008 ACTION CALENDAR

## JANUARY

- Hosted a New Member Breakfast for new MCL members to meet board directors and become familiar with current and future environmental issues facing Marin.
- Joined with the Sierra Club Marin Group to sponsor "Conservation through Cultivation: Watershed Protection in Your Own Garden", a presentation exploring hands-on tools for water conservation.
- Submitted an Amicus Curiae brief in support of a legal challenge to North Coast Railroad Authority's Environmental Impact Report on the ground that it violated the CEQA requirement that an EIR examine the whole of a project.
- Continued to promote the least environmentally damaging alternative (option 12b) for widening and other improvements to Highway 101 through the "Sonoma-Marin Narrows."
- Supported a proposed San Rafael ordinance that would require mixed-use (including affordable housing) to be considered in planning future renovations of commercial malls, such as future Northgate mall redevelopment.
- In association with the Community Marin coalition, initiated discussions with Marin Community Development Agency staff and County supervisors to ensure implementation of high priority policies in the 2007 Countywide Plan, including streamside protection, sustainable water supply, and expansion of the baylands corridor.



## FEBRUARY

- Hosted a Business-Environment Breakfast, featuring State Assembly Representative Jared Huffman, who outlined his environmental legislative priorities for the year.
- Administered funds for the sixth year of a long-term project to remove invasive plant species on Gold Hill and Peacock Gap areas of San Rafael.
- Launched a successful fund raising campaign to help Marin County purchase a critical half-acre to enable public access to trails of Baltimore Canyon, Blithedale Ridge and the eastern shoulder of Mt. Tamalpais, through the former Janis Joplin property in Larkspur. (See Baltimore Canyon Trail Access Box for details.)
- Conducted successive field visits to Sorokko property on Paradise Drive to evaluate subdivision options so as to preserve drainages, minimize intrusion into oak knoll woodland, and buffer two populations of endangered Marin Dwarf Flax on the site, and advocated for clustered development on the site.
- Studied opportunities to preserve developable land as public open space on Sunset Ridge in Novato, which would link Indian Valley College open space with other public open space.



## MARCH

- Opposed the California Department of Food and Agriculture's proposed Aerial Spraying Plans for control of the Light Brown Apple Moth (LBAM).
- Supported a plan for removing vacant office buildings and converting the property at 32 San Pablo, opposite Marin County Civic Center, from its current office use to a residential apartment and affordable housing complex, on the basis of its infill location and proximity to public transit and services.
- Opposed SB1295 that would limit the ability of the Coastal Commission to track and review actions by local jurisdictions on development permits, thereby impeding its mandate under the Coastal Act to preserve and protect our coastal environment.
- Submitted extensive comments on Marin Municipal Water District's proposed Desalination Project DEIR, stating that the need for the project should be more fully justified and that additional conservation and efficiency-based alternatives to meet Marin's current and future water supply requirements should be analyzed.

## APRIL

- Opposed SB1334, which would diminish the effectiveness of earlier legislation intended to phase out lead from brass plumbing in drinking water distribution pipes and consumer plumbing fittings and faucets.
- Hosted the MCL Annual Dinner on April 25, with Mathis Wackernagel, Executive Director of Global Footprint Network, as keynote speaker, and awarded Clem Shute, well-known environmental and land use law attorney, the Peter Behr Lifetime Achievement Award. (See Ecological Footprint Box for details.)
- Submitted oral comments to the Board of Supervisors on the Draft EIR on the San Rafael Rock Quarry Amended Operating Permit and Reclamation Plan, emphasizing the need to monitor mitigation measures over the possible 15-year life of the quarry.
- Helped celebrate Earth Day by participating in the AAA car battery recycling program.
- Submitted questions and a detailed request for clarifications of issues raised by the SMART Supplemental EIR and its financial analysis.
- Supported AB2121 regarding Instream Flow Policy and commended the Division of Water Rights (State Water Resources Control Board) for their scientific analysis of the potential impacts of residential and agricultural water withdrawal and importance of maintaining sufficient instream flows to support fish habitat.

- Supported certification of the Final EIR on expansion of Redwood Landfill, on the condition that major deficiencies in Mitigation Measures be resolved (See Redwood Landfill Box for details).

## MAY

- Urged Governor Schwarzenegger to cancel scheduled closures of California State Parks, including Tomales Bay State Park, as a means of closing the state budget deficit.
- Opposed Proposition 98 concerning California's eminent domain laws, which contained many hidden provisions that would impair environmental protection, and in its stead, supported Proposition 99, which prohibited government from using eminent domain to take a single family home to transfer to a private developer without sacrificing environmental protection and public health or welfare.
- Jointly opposed, with Friends of Corte Madera Creek, the Morgan Development in Kent Woodlands, which would encroach on the Streamside Conservation Area (SCA) along Tamalpais Creek, a known steel-head fishery that could also support coho salmon.

### Redwood Landfill

After more than ten years of monitoring environmental impact reports on the application to expand Redwood Landfill, MCL finally agreed that, with detailed mitigation measures to ensure long-term safety over the life of the landfill, the Final EIR could be certified. (MCL requested strengthening the EIR's timelines and performance standards, and sought an analysis of levee stability, a plan for long-term leachate control and financial assurance that future groundwater contamination would be remediated, advance plans for flood control and GHG emissions reduction, and third-party overview of operations.) The Planning Commission incorporated most of MCL's concerns in its recommendations to the Department of Health Services, the local enforcement agency. Review of permit conditions continued into 2009.

## JUNE

- Hosted "Partnering for Environmentally and Economically Sustainable Solutions," a Business-Environment Breakfast with guest speaker Ashley Boren, Executive Director of Sustainable Conservation, a non-profit that assists businesses in turning environmental challenges into economic benefit.
- Submitted comments to the Town of Corte Madera on its DEIR for the Corte Madera General Plan Update which questioned the need for an additional 185,000 square feet of retail space and 300 new dwelling units at The Village shopping center and criticized the absence of adequate analysis of growth impacts for expansion of this magnitude.





# MARIN CONSERVATION LEAGUE 2008 ACTION CALENDAR



- Urged Novato City Council to consider the impacts of a proposed development at the entrance to Pacheco Valle on significant archaeological resources, the riparian habitat of Pacheco Creek, and the additional traffic that would result from the development.

## JULY

- Submitted comments to the Golden Gate National Recreation Area on alternative concepts under consideration for the General Management Plan update, emphasizing the need to pay special attention to restoring, preserving, and maintaining ecological systems, and to locate more intensive human uses in areas of least sensitivity.
- Hosted the "Annual Picnic on the Porch" for MCL members and guests at the League's office in San Rafael.
- After years of careful analysis and promotion of a range of transportation alternatives, opposed Measure Q, the ¼ cent tax measure to fund the SMART commuter train proposal, on the basis that it failed to demonstrate financial cost effectiveness and did not resolve certain operational impacts, including noise and vibration.

## Ecological Footprint

In the past few years, the "ecological footprint" has become one of the best known metaphors for measuring the consumption of the earth's resources. The term "carbon footprint" derives from that source. The co-inventor of the "ecological footprint," Mathis Wackernagel, spoke at MCL's Annual Dinner. Dr. Wackernagel heads the "Global Footprint Network," a consortium of 90 partnerships working on six continents to better understand how humans, collectively, are exceeding the resources of the planet and how to reduce the "footprint" of individuals, communities, and nations.

## AUGUST

- Actively supported the proposed Parks and Open Space, Fire Management, and Agricultural Preservation Sales Tax Measure for the November 2008 ballot. (The Board of Supervisors voted to defer placing the measure on the ballot.)
- Continued to oppose the project and monitor progress of environmental studies on the proposed 70,000 square-foot indoor recreation facility at the Smith Ranch/San Rafael Airport adjacent to sensitive habitat for the endangered California Clapper Rail in the tidal marshes along Gallinas Creek.
- Participated in the joint Federal Aviation Administration and Marin County briefing and scoping sessions at Gness Field and submitted comments on the scope of the Draft EIR/EIS concerning design and location alternatives for the proposed runway extension, noise and wetlands impacts and noting the proximity of the runway extension to the Redwood Landfill and consequent aircraft exposure to bird strike hazards.

## SEPTEMBER

- Supported AB 2537 which would continue to exempt volunteers and conservation corps members from the prevailing wage requirement, thus allowing non-profits to continue their work in restoration projects in California communities.
- Hosted a presentation on "Marin Clean Energy" at a Business-Environment Breakfast, with guest speakers Jim Detmers, California Independent System Operator; Jan Hamrin, Center for Resource Solutions; Andrea Morrison, Direct Energy; and Charles McGlashan, Marin County Supervisor.
- Testified before the Board of Supervisors concerning the Sorokko Master Plan and Land Division on Paradise Drive, Tiburon Peninsula, that the applicant's Preferred Alternative could compromise a significant oak woodland and visually prominent knoll, and that building envelopes should be significantly reduced.



- Led a Coastal Clean Up project along the Jean and John Starkweather Shoreline Park path on the edge of San Pablo Bay in San Rafael.
- Hosted a New Member Breakfast which provided an opportunity for new MCL members to meet directors of the board and become familiar with current and future environmental issues facing Marin.

## OCTOBER

- Supported the County Board of Supervisors decision to impose a housing impact fee on new or substantially remodeled homes of 2,000 square feet or greater, to ensure a continued stream of revenue to support affordable housing projects.
- Urged the Board of Supervisors to adopt strict timelines for the implementation of conditions in the Lawson's Landing Master Plan, including an Adaptive Management Plan, upgrading septic systems, removing camping activities from wetlands and wetland buffers, and other safeguards to ensure that the natural habitats of the Tomales Dunes and other sensitive habitats on the site are protected.
- Alerted San Rafael city officials to numerous environmental issues associated with a huge Target "Big Box" store proposed for land near the San Pablo Bay shoreline in East San Rafael.

## Baltimore Canyon Trail Access

Starting in January 2008, Marin Conservation League's Board partnered with the Marin County Open Space District to raise funds to assist in purchase of a critical piece of property in Baltimore Canyon, Larkspur, owned by the Lessin Family Trust. The parcel was formerly owned by Janis Joplin. One half-acre was needed to give the public access to Baltimore Canyon Preserve and the various parts of Northridge open space lands above. Over a period of three months, MCL successfully raised \$70,000 from members and others toward the total \$450,000 needed for the acquisition.



## NOVEMBER

- Recommended certification of the Redwood Landfill Final EIR, with the request that the Planning Commission forward specific recommendations on mitigations (conditions) to the Local Enforcement Agency, to ensure that the "Mitigated Alternative," as amended, would establish the highest possible safety provisions.
- Hosted a Business-Environment Breakfast featuring newly-elected State Senator Mark Leno, who discussed the problems of carrying out an environmental agenda in the legislature in times of severe state budget limitations.
- Hosted a presentation by the Transportation Authority of Marin to discuss Phases I and II of the Central Marin Ferry Connection portion of proposed Highway 101 Greenbrae/Twin Cities Corridor Improvements, with a focus on environmental issues such as endangered species in tidal marshes adjacent to the alignment of Phase II.
- Submitted comments on the Marin Municipal Water District's Desalination Project Final EIR and encouraged exploration of additional conservation-based alternatives.
- With others, signed a letter to Senator Barbara Boxer re-affirming MCL's position that Drakes Estero in Pt. Reyes National Seashore, which is designated as "potential wilderness," should be allowed to revert to wilderness status when the Drakes Bay Oyster Company's Reservation of Use expires in 2012.

## DECEMBER

- Attended a scoping session and submitted comments to the Marin County Department of Public Works on the proposed rehabilitation of Sir Francis Drake Blvd. through Samuel P. Taylor State Park which could have significant impacts on redwoods lining the road and damage the habitat of endangered coho salmon and steelhead in Lagunitas Creek
- Reviewed the Draft Supplemental Environmental Impact Report and Environmental Impact Statement for Hamilton Wetlands Restoration Project, Dredged Material Aquatic Transfer Facility – a proposal to excavate a large basin in the floor of San Pablo Bay for interim storage of dredged sediments destined to be transferred to the Hamilton Wetland Restoration site.
- Attended West Marin community meetings and raised issues that should be addressed in the update to the Local Coastal Program, which will be in process throughout 2009; meetings were held in Muir Beach, Stinson Beach and Tomales (the latter in January 2009)
- Hosted MCL's Annual Holiday Party for its members and guests.



## MCL SUPPORTERS

### *Gifts of \$1,000 or more*

Deborah and Arthur Ablin Family Fund  
Catherine Amparano  
Anonymous  
Arntz Family Foundation  
Jean and Lee Berensmeier  
Robert Blitzler and Xenry  
Wayne Clark  
Carson Cox and Deborah Haase  
Cox Family Fund  
Nona Dennis  
Drexler Estate Fund  
William Eastman, Bishop Pine Fund  
Dixon and Barbara Farley  
Joanne and Peter Haas, Jr. Fund  
John Brockway Huntington Foundation  
Robert and Carole McNeil  
Stanley and Georgene Pasarell  
Bruce Scott and Trudie Behr Scott  
Michael and Alison Seaman  
Greg Shatkin  
Willis and Marion Slusser  
Jean Starkweather  
The Estate of Clifford V. Shireman  
Winifred and Harry Allen Foundation  
Rex Wolf  
Marin Community Foundation  
San Francisco Foundation

### *Gifts of \$500 to \$999*

Baywood Artists (Brandvia Alliance, Inc.)  
Thomas Allen, Jr.  
Stuart and Jean Brown  
Bunker & Company  
David and Claudia Chittenden  
David and Erin I. Elliott Family Fund  
Michael Deverell  
Fireman's Fund  
Bruce Fullerton and Antonina Markoff  
Edward Gaston and Lori Zager  
Theodora Gauder  
Heritage Landscapes  
Katharine Johnson  
Jack Krystal  
Pete and Doris Lindfors  
James and Pamela Lloyd  
Kathy and Rick Lowrey  
Hersh Markusfeld  
Alan and Patricia Negrin  
Frank and Lois Noonan  
Cynthia J. Rigatti and Brian Ashe  
Roger and Dorothy Roberts  
Tim Rosenfeld and Jan Hamrin  
Robert and Shirley Sanderson Fund  
Richard and Jill Sideman

### *Gifts of \$250 to \$499*

Janet and Bruce Allen  
Theodore Bayer  
Charles Brousse and Phoebe Moyer  
Jack and Merilou Clapper  
Jana Haehl  
Alan Hakimi and Rachel Stone  
Collier Kimball  
Cynthia Lamar and Jonathan Goerke  
Michael Linvill  
Dennis and Susan Moritz  
Michelle Passero and Ira Chin  
Christine Pielenz  
Purple Lady/ Barbara J. Meislin Fund  
Douglas and Brenda Redfern  
Larry and Grace Smith  
Norman and Carol Traeger

### *Gifts of \$100 to \$249*

David Adams  
Jane Allen  
Paul Andersen and Leland McCormick  
Janice Anderson-Gram  
Laurie Anger  
Anonymous  
Joyce and David Applen  
Karen Arroyo  
Helme Avery  
Ivan Barzakov and Pamela Rand-Barzakov  
Erica Baum  
Theodore Bayer  
Elizabeth Benz  
Robert Berner  
Janice Berry  
Marjorie Bertolino  
Betsy and Daniel Bikle  
Jerry and Celeste Binnings  
Mark and Beverly Birnbaum  
Teresa Bright  
Meryl Brod  
Bradley and Carla Buchanan  
Wendy Buchen  
John and Deborah Buehler  
Michael and Priscilla Bull  
Robert and Linda Bundy  
Raymond and Joan Burgarella  
Kimberly Burke  
Robert and Betty Burke  
Wiebke Buxbaum  
Helen Kennedy Cahill  
William C. Callender  
Elsie R. Carr  
Tymber and Derek Cavasian  
Leonard Charles and Lynn Milliman  
Carol Claypool  
James and Linda Clever  
Elizabeth Colson  
Nancy Curley

George and Dale Davidson  
C. Vincent and Jacqueline de Nevers  
David Dee and Patricia Callahan  
J. Brian Delfanti  
Charles and Lillian Donald  
Jeffrey and Lynn Dunn  
Joanne Dunn  
Pamela Edwardson  
Heather English  
Anna Everest and James Kennedy  
Kit Everts  
David and Carol Fairchild  
Gerald and Leona Feickert  
Teresa Ferrari and Jeffrey Saarman  
Dennis and Pamela Fisco  
Anne and Mason Flemming, Jr.  
Barry Flicker  
Geoffrey and Susan Flint  
Heidi Flori  
Gary Ford  
Frank Howard Allen Realtors  
John Franklin and Nora Contini  
Alice Fredericks  
David and Esther Frey  
Joshua Frost and Amy Cosby  
Brock and Alison Fuller  
Heather Furmidge  
Stephen and Pamela Gach  
Stephen Galiani  
Gardeners' Guild  
Gary Giacomini  
John and Elisabeth Gleason  
Carol Gold  
Catherine Goshay  
Randy and David Greenberg  
John and Deborah Greenspan  
Jonathan and Judith Groesbeck  
Tom and Sandra Guldman

Gary and Barbara Haber  
Ingeborg Hallock  
Warren Halperin and T. Laura Comyns  
Donald and Lillian Hanahan  
Lois Hartley Cannady  
Henry Helson  
Harry and Elaine Hicks, Jr.  
Frederic and Sandra Hirschfield  
Janice Hitchcock  
Peter and Linda Hoch  
Wade and Sandra Holland  
David Holloway  
Jean Holm  
Robert and Linda Holtzaple  
Rachel Hooper and Peter Zingg  
Susan H. Hossfeld  
Daggett and Sara Howard  
David Hunter  
David and Marjorie Ihle  
Marion Irvine  
Eugene and Joan Jacks  
Mary Jean M. Jawetz  
Jewish Family & Children's Services  
Harry and Margery Johnson  
Margery Johnson  
Stanley Johnson  
Colleen Johnson  
Kaiser Permanente  
Employee Giving Program  
Robert and June Kelly  
Brannon Ketcham and Kathleen Abbott  
Gary Kraght

Erik Krumrey and Sunny Lee  
Andria and Lyle Langenberg  
Peter Ledee  
Mardi Leland  
Richard and Betty Leonards  
Jane Levinsohn  
Warren and Barbara Levinson  
Gretchen Likander  
Michael Lipsey  
James and Diana Long  
William Long  
Joan Lubamersky  
Richard and Catherine MacDonald  
Charles Maher  
Ron and Amanda Mallory  
Marin Agricultural Land Trust  
Steve and Margareta Martin  
Stephen Mason and Ginger Souders-Mason  
Robert Matthew  
Pete McFarland  
William Mena  
Amy Meyer  
Albert Meyer, Jr.  
Edward Middleton  
Don H. Miller  
Robert Mithun  
Anne Montgomery  
Sandra Morrash  
J. Fraser and Helen Muirhead  
Lettie Multhaupt  
National Semiconductor  
Don and Patty Neubacher  
Harry North  
Donald and Diana Nunemaker  
Julie Nunes  
John and Karen Nygren  
Peter and Ellen Obstler

Jack and Mary Olive  
Dennis and Whitney O'Neill  
Virginia Patterson  
Lauren Pollak and Dieter Tremp  
Dennis Pope  
Rollin and Diane Post  
Mary Pottier and Warren Franklin  
Allen and Lisa Preger  
Anthony Prud'homme  
Sara Purcell  
James Pyskaty and Crystal Cox  
Gary T. Ragghianti  
Barbara Rahe  
Alan Ramadan and Christine Hahn-Ramadan  
Peggy Rathmann and John Putnam Wick  
Charlie and Patsy Raven  
Pamela Reaves and Catherine Lee  
Phil and Kathy Reilly  
Denis Rice and Pamela Blum  
Michael Ring  
Billie Robertson  
Dennis and Judith Rodoni  
Michael and Sheila Rokeach  
Jane Roos  
Martin Roth  
Jean-Pierre and Isabella Salzmann  
Rudi and Sonja Schmid  
David Schreck  
Susan Severin  
John and Elinor Severinghaus  
Lori Shearn  
Charles and Mary Sink

Gilbert Smith  
William Smith, Jr. and Kathleen M. Zirker-Smith  
Dan and Sara Sonnet  
Robert and Jean Soost  
Susan and Robert Spofford  
Gary Spratling  
Stuart and Elizabeth Stephens  
Susan and Brian Stompe  
Robert Streich  
Marcella and Mark Stull  
John and Joan Thayer  
Max and Phyllis Thelen, Jr.  
Richard and Barbara Tracy  
Michael Tramontin and Eileen O'Connor  
Frank and Judy Valone  
Mary Van Voorhees  
Kenneth and Christina Waldeck  
Cornelia Wattleby  
Ralph and Rosalie Webb  
David and Idie Weinsoff  
David and Barbara Whitridge  
Don and Gail Wilhelm  
M. Kraemer Winslow  
James Wintersteen  
Michael Wood  
Periann Wood and Doug Wilson  
Wendy Wyse and Bruce Dodge  
Tina and Kelvin Zwiefelhofer

Plus 662 additional donations under \$100

# *Thank You for Supporting Marin*



## SUPPORTERS OF SPECIAL PROJECTS

### Friends of Bayfront Meadow

*Gifts of \$1,000 or more*

Thomas Allen, Jr.  
Nanna-Lea Fox

*Gifts of \$100 to \$999*

Anonymous  
Jack and Merilou Clapper  
Margritha Fliegauf  
David Kennedy and Ruth Holly  
Joyce and Robert Kleiner  
Stephen and Kathryn Moore  
David Raub  
Regina Rohe  
Alfred Spizzy  
Bill and Bonnie Stevens  
Robert and Donna Toft

**Plus 27 additional donations  
under \$100**

### Baltimore Canyon Acquisition

*Gifts of \$1,000 or more*

Anonymous  
The Arntz Family Foundation  
Bunker & Company  
California Alpine Club  
Drexler Estate Fund  
Douglas and Carol Kerr  
Marin Community Foundation  
Christina McArthur  
Edward Middleton  
Diane Parish  
Stanley and Georgene Pasarell  
Michael and Doniel Pasha  
Willis and Marion Slusser  
Stephen and Christine Wilsey  
Rex Wolf

*Gifts of \$100 to \$999*

ADF Research  
Janet Allen  
Melba Anderson  
Judy Arnold  
Karl Baeck  
Doris Bassett  
Frank and Lee Battat

Gerald and Leona Feickert  
Barry Flicker  
Barbara Ford  
Christopher and Allison Fragakis  
Carol Fraker  
Michael Freeman  
Raul Gallyot and Ann Gessert  
Kay Gillis  
Maureen Groper  
Claudia Gropper  
Marjorie Guggenheim  
Tom and Sandra Guldman  
Gary and Barbara Haber  
Jana Haehl  
Eliza Haskins Koepfel  
Miranda Heller  
Henry Helson  
Robert and Rebecca Henn  
James Holmes  
Dee Holthe  
John Jansheski  
Pierre Joske  
Roy Kissin and Elizabeth Petroff  
Susan Kraft and Patrick Scott  
Robert Lea and Melinda Booth  
Richard and Karen Lefurgy

Robert and Shirley Sanderson Fund  
Susan Severin  
Greg Shatkin  
Charles and Mary Sink  
Dan and Sara Sonnet  
Jean Starkweather  
Stephanie Stein  
Terry Sternberg and Zoe Sternberg  
Mary Terrill  
James Thomas  
Jody Thompson  
Marsha Torkelson  
Michael Tramontin and Eileen O'Connor  
Mary Van Voorhees  
Kathryn VanDyke  
Nancy Weninger and Claud D. Price  
Effie Westervelt  
Don and Gail Wilhelm  
Christine Wood

**Plus 143 additional  
donations under \$100**

### Invasive Species Removal Fund

*Gifts of \$1,000 or more*

Dominican University of California  
Dominican/Black Canyon  
Neighborhood Association  
Jones-Smith Foundation  
Stanley and Georgene Pasarell  
Trinity Community Church

*Gifts of \$100 to \$999*

Richard and Dorothy Breiner  
Margritha Fliegauf  
Carol Olwell  
Roger Smith  
Paul and Kathleen Thompson

**Plus 2 additional donations  
under \$100**

Bellam Self Storage and Boxes  
Patrick and Maria Bennett  
Betsy and Daniel Bikle  
Donald and Renate Bixby  
Allan and Sydne Bortel  
Barbara Breger  
Joyce Britt  
Charles Brousse and Phoebe Moyer  
Jennie Bruyn  
Michael and Priscilla Bull  
John and Anne Busterud  
California Alpine Club Foundation  
Donna Cameron  
Jean Canepa  
Douglas Canfield  
Elsie R. Carr  
Tymber and Derek Cavasian  
David and Claudia Chittenden  
Jack and Merilou Clapper  
James and Linda Clever  
Terrence and Helga Comerford  
Tom and Kay Conneely  
Nancy Curley  
Tim and Linda Curtis  
George and Dale Davidson  
Peter Davis  
Bob and Dotti Day  
Nona Dennis  
Darrel and Suzanne Denny  
Michael Deverell  
Joanne Dunn  
Barbara Dwyer  
Jeanne Eber  
David and Erin Elliott  
William Ellis  
Richard Esteb and Alexandra Cock  
Phyllis Faber  
Pete Farland

Mardi Leland  
Linda Levey and Mary Hanley  
William Long  
Joan Lubamersky  
Joan Lundstrom  
Richard and Catherine MacDonald  
Susan Machtinger  
Ron and Amanda Mallory  
Allen and Eleanor Martini  
Stephen Mason and  
Ginger Souders-Mason  
Marrianne Matthews  
Mort and Grace McMichael  
Barbara Meislin  
William C. Mentzer and  
Roni Peskin Mentzer  
Jane Miller  
Robert Mithun  
Edward Mittelstaedt  
Lynne Morin  
Dennis and Susan Moritz  
Tim Nardell  
The Noble Family Trust  
Frank and Lois Noonan  
Edith Pilch  
Nancy and Robert Praetzel  
Joseph and Jane Purkey  
Charlie and Patsy Raven  
David and Barbara Rice  
Cynthia J. Rigatti and Brian Ashe  
Douglas Rigg  
Marilyn River and Donald Sadowski  
Roger and Dorothy Roberts  
Daniel Rosen  
Timothy Rosenfeld and Jan Hamrin  
John Rutledge  
Jay and Barbara Salzman

### Business Members

AIB Business Consulting, Inc.  
Bank of Marin  
Bartlett Tree Experts  
Bellam Self Storage and Boxes  
California Native Plant Soc. Marin  
Frank Howard Allen Realtors  
Law Offices of Paul M. Minault  
League of Women Voters of Marin  
Marin Farmers Markets  
Marin Fence Co.  
Marin Garden Club  
Marin Sanitary Services  
Markoff/Fullerton Architects  
North Bay Lighting & Electrical  
North Landscaping, Inc.  
Pacific Union Real Estate Group  
Perry's Art Supplies and Framing  
Pleasures of the Heart  
Redwood Landfill, Inc.  
Seagate Properties, Inc.  
Serenity Knolls  
The Outdoor Art Club  
Westamerica Bank - San Rafael

# *n Conservation League in 2008*





RETURN SERVICE REQUESTED



# Marin Conservation League 2008 Annual Report



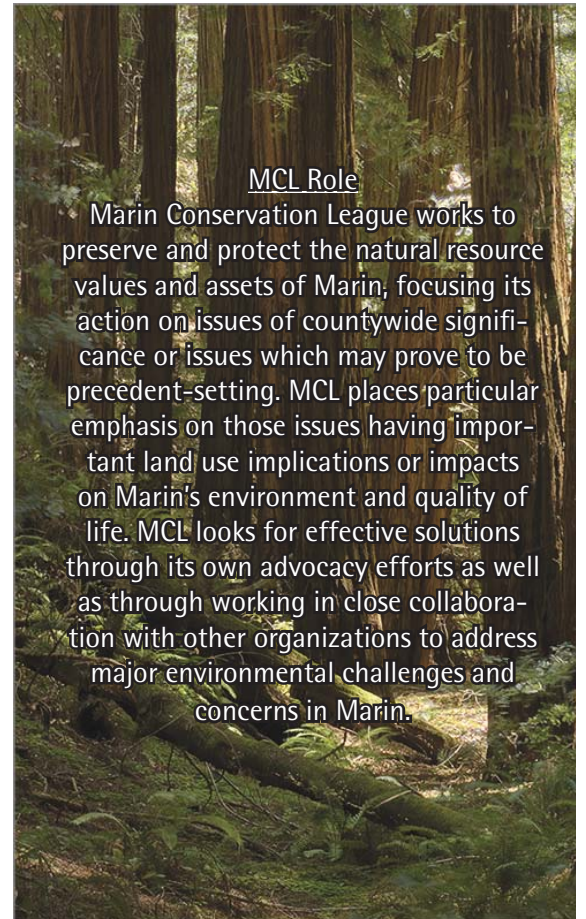
## *A Legacy of Conservation*

*MCL played a major role in preserving and protecting many of Marin's most stunning and well-loved landscapes.*

Map by Ben Pease • www.peasepress.com

## MCL Role

Marin Conservation League works to preserve and protect the natural resource values and assets of Marin, focusing its action on issues of countywide significance or issues which may prove to be precedent-setting. MCL places particular emphasis on those issues having important land use implications or impacts on Marin's environment and quality of life. MCL looks for effective solutions through its own advocacy efforts as well as through working in close collaboration with other organizations to address major environmental challenges and concerns in Marin.



© BOB GRACE